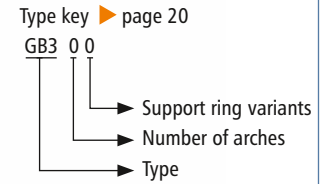
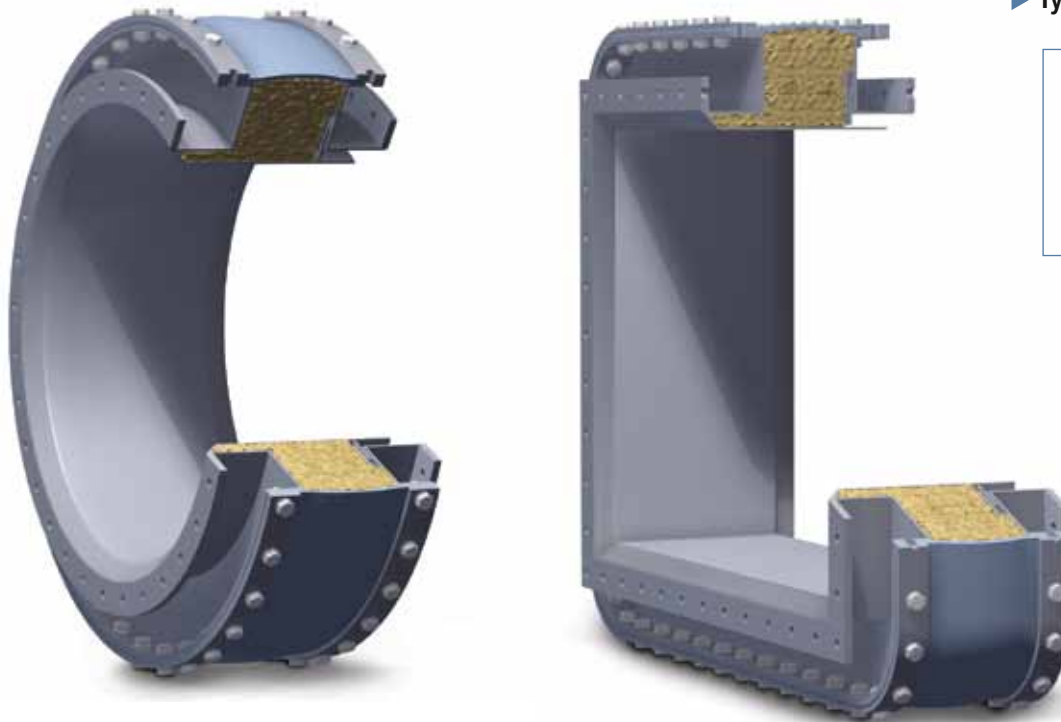


## GB300

### ► Type GB300



## Belt expansion joint on duct angles with pre-insulation, without arch

<b>Design:</b>	Straight or conical elastomer or multilayer expansion joint with sleeve for clamp bar fixing Optional expansion joint with installation seam
<b>Installation method:</b>	Clamp bar fixing on duct angles
<b>Dimensions:</b>	For round and rectangular duct cross sections
<b>Installation length:</b>	= Installation gap + 2x fixing width Individually according to customer specifications
<b>Fixing width:</b>	Depends on pressure and nominal diameter between 60 and 100 mm
<b>Media temperature:</b>	Depending on the height of the duct angle and duct lining, suitable for up to 1200 °C
<b>Pressure:</b>	Up to ±0.25 bar Higher pressures on request
<b>Movement:</b>	For axial, lateral and angular movements Benchmarks: axial compression = approx. 0.20 x installation gap axial extension = approx. 0.20 x installation gap lateral displacement = approx. 0.15 x installation gap In the event of axial extension and simultaneous lateral displacement, movements are reduced For large lateral movements, we recommend presetting the duct against the direction of movement

### Application:

Power plants, waste incineration plants, gas turbines, cement factories, paper industry, steel industry e. g. in exhaust pipes, in ventilators, in air ducts, in ash lines, in filter systems

## Expansion joints

Multilayer expansion joint	
<b>Temperature:</b>	Depending on the duct angle height and lining, up to 1200 °C
<b>Design:</b>	Multilayer fabric expansion joint consisting of interior insulating layers, embedded sealing films and exterior pressure carrier fabrics.
<b>Material:</b>	<p><b>Internal layers:</b> PTFE glass fibre fabric laminate, glass fibre fabric, glass mat, silicate fabric</p> <p><b>Sealing films:</b> PTFE film, stainless steel film</p> <p><b>External layer:</b> Silicon coated glass fibre fabric, PTFE-glass fibre fabric laminate</p>

## Pre-insulation

**Design:** Insulation layers, cut to the installation gap, consisting of heat-resistant wire mesh  
 Insulation layers made from glass, ceramic, silicate or mineral wool  
 Optional installation-ready, fabric-sheathed insulation pillow  
 Duct lining necessary for high medium temperatures

## Clamp bar

**Design:** Multi-part clamp bar with slotted holes

**Materials:** Carbon steel: 1.0038 (S235JRG2)  
 Stainless steel: 1.4301 (X5CrNi18-10)  
 1.4571 (X6CrNiMoTi17-12-2)  
 Other materials on request

**Coating:** Primed, hot-dip galvanised, special paint

## Optional accessories

**Fixing:** Screws, nuts, washers, disc springs

**Installation unit:** Installation-ready installation unit complete with pre-mounted expansion joint, flow liner and connecting ends for welding or screwing into the duct (▶ page 297)

**Installation set:** Tools and aids for punching and closing the expansion joint seam

Planning help GB300

